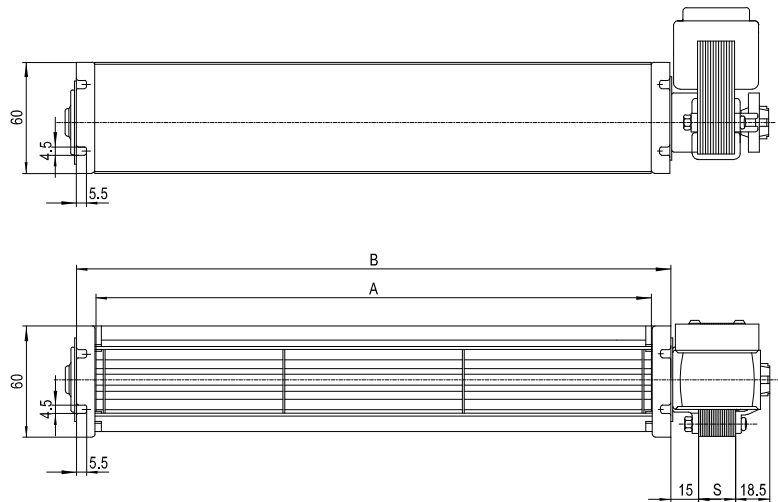
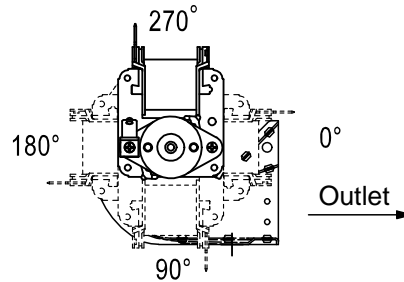
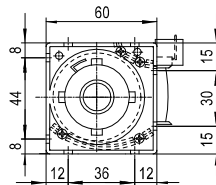


TG 45 / 2 100 - 360



Alternative motor angles:



Special low profile through-flow version.

A mid range option that is in regular use in electric fires, floor convector and refrigerators.
Standard for all motor types: insulation class F or H; motor available with encapsulated bobbin,
230V/50Hz alt. 120V/60Hz alt. 24V AC/DC.

Stack size (S) : 10/15/20/30

Blower	A	B
TG 45/2-100	100	121
TG 45/2-120	120	141
TG 45/2-150	150	171
TG 45/2-180	180	201
TG 45/2-200	200	221
TG 45/2-240	240	261
TG 45/2-250	250	271
TG 45/2-300	300	321
TG 45/2-360	360	381

Description	
Airflow	Up to 145 m ³ /h
Input Power	Up to 28 W
Pressure	Up to 25 Pa
Speed	Up to 2600 RPM

Crossflow blower description example:

Crossflow blower _____ TGA 45 / 2 - 180 / 30
 Motor pos. L (O) / R (A) _____
 Wheel diameter _____
 Housing's profile 1/2 _____
 Length _____
 Stack size _____